



2 South Quay Plaza, Marshwall , London, E14 9WS

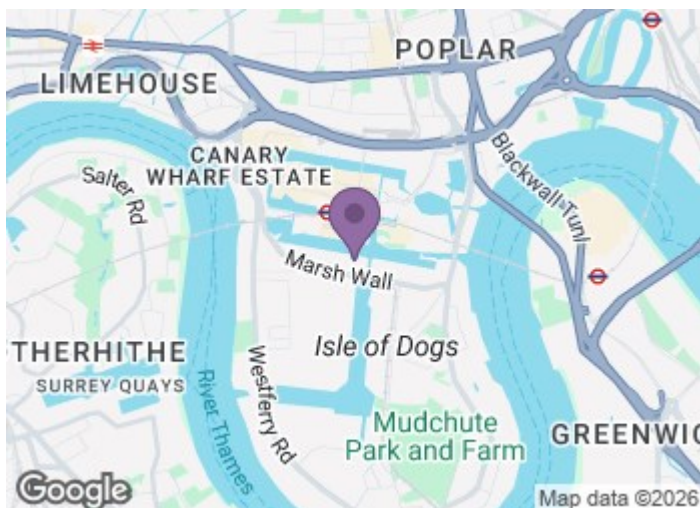
South Quay Plaza offers luxury modern living in the heart of Canary Wharf, combining exceptional connectivity with world-class resident facilities. Just moments from the Jubilee Line, Elizabeth Line and DLR, the development places the City, West End and London City Airport within minutes. Residents enjoy exclusive access to The Quay Club, featuring a swimming pool, spa, gym, co-working spaces, cinema and beautifully landscaped gardens. Set within a vibrant waterside neighbourhood surrounded by restaurants, shops and green spaces, Harcourt Gardens delivers a rare balance of lifestyle, convenience and design-led living—ideal for professionals, owner-occupiers and investors alike.

£690,000

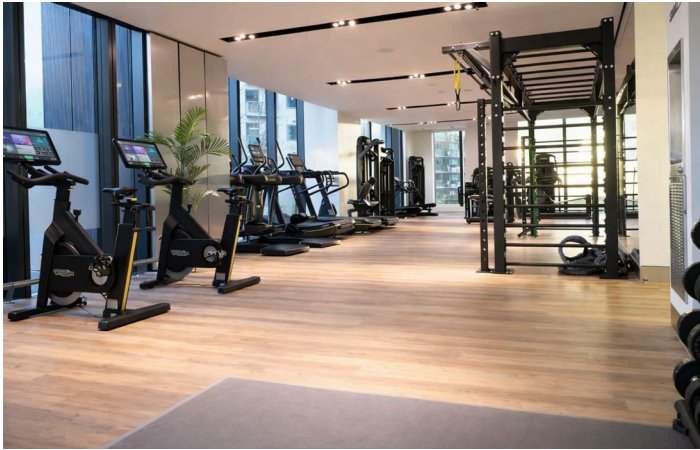
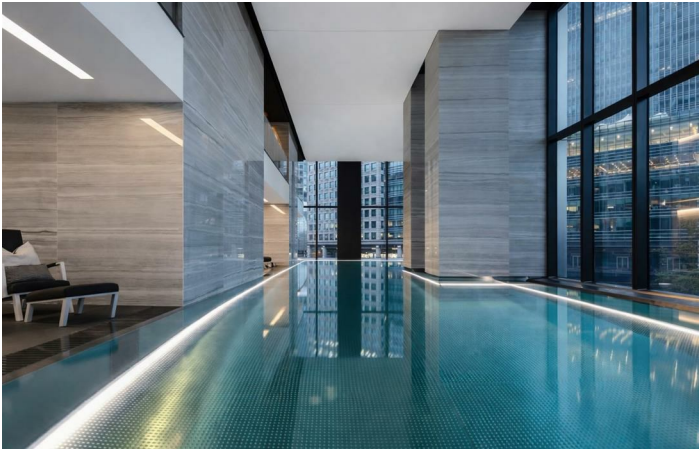
2 South Quay Plaza, Marshwall , London, E14 9WS



- 5 min walk to South Quay DLR
- 10 mins to Liverpool street from Elizabeth line
- 11 mins to London city airport from DLR
- 24 hour concierge
- State of art gym and fitness studios
- 20m swimming pool
- ?Sky Meadow & landscaped gardens
- Residents' co-working spaces
- Private cinema/games room/sound-proofed karaoke room

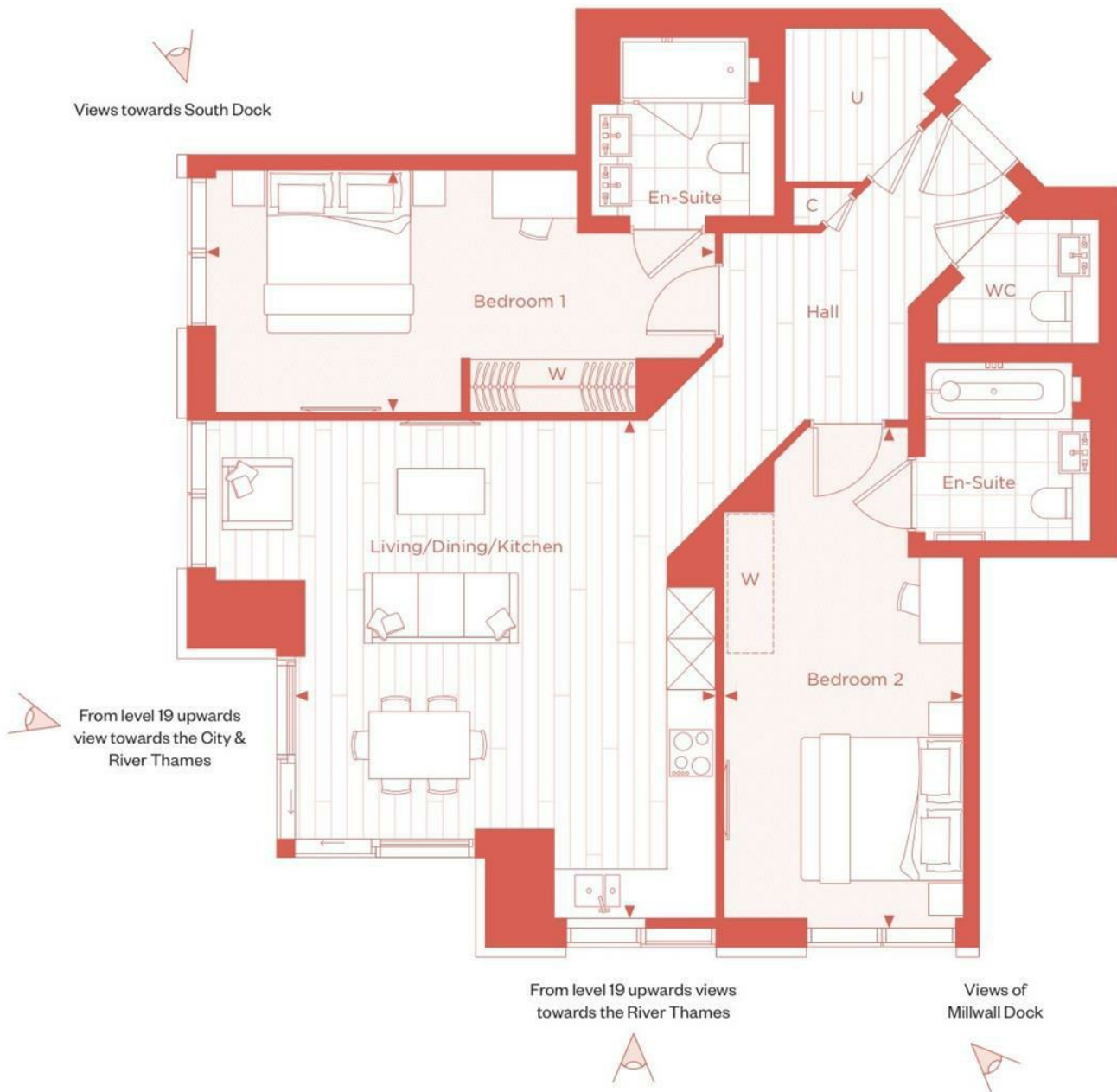


Directions





Floor Plan



These particulars, whilst believed to be accurate are set out as a general outline only for guidance and do not constitute any part of an offer or contract. Intending purchasers should not rely on them as statements of representation of fact, but must satisfy themselves by inspection or otherwise as to their accuracy. No person in this firms employment has the authority to make or give any representation or warranty in respect of the property.

Energy Efficiency Rating		Current	Potential
Very energy efficient - lower running costs			
(92 plus) A	81		
(81-91) B			
(69-80) C			
(55-68) D			
(39-54) E			
(21-38) F			
(1-20) G			
Not energy efficient - higher running costs			
England & Wales		EU Directive 2002/91/EC	